

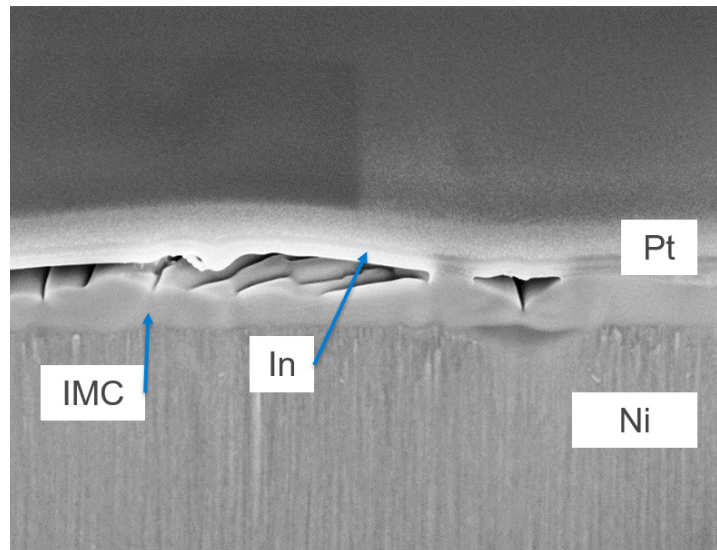
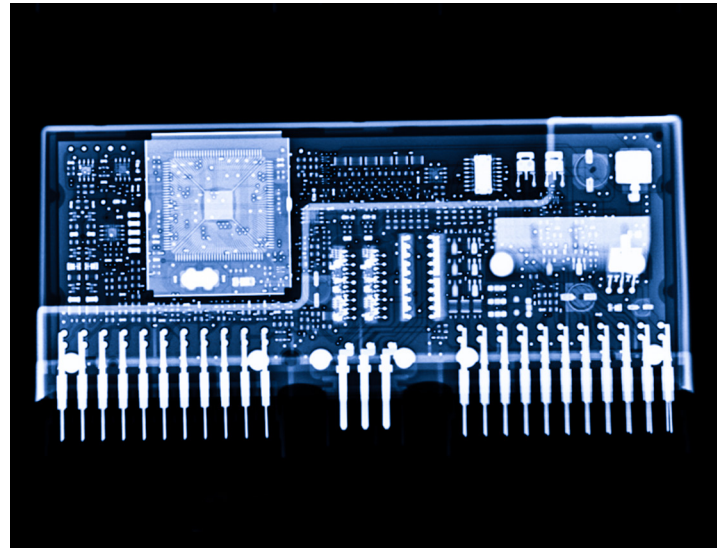
M-Contact IN-2000

Acid Indium for Connector Plating

The Performance of Pure Tin, with the Whisker Resistance of Indium

M-Contact IN-2000 is the choice for high performance indium plating in today's most technologically demanding connector applications. With a wide current density range, greater than 90% plating efficiency across the entire bath life, and resistance to many kinds of metallic bath contaminants, it is an excellent coating for any metal sub-layer. The superior physical properties of Indium mean that it has a greatly reduced chance of whiskering when compared to pure tin, and the low stress / matte white deposit provides a cosmetically uniform and appealing finish appearance.

M-Contact IN-2000 is available for integration with MacDermid Enthone's leading stack of connector plating baths for nearly any combination of metal coatings imaginable.



KEY FEATURES

- Excellent uniformity across many geometries
- Low stress, matte white deposit with uniform grain size
- Easy to control and fully analyzable
- Long bath life, greater than 90% plating efficiency
- Wide current density range
- Lower propensity to form whiskers compared to pure tin
- Equivalent sheet resistance to tin
- Performance unaffected by large amounts of bath contaminants (Sn, Cu, Zn, Ni, Pb and Fe up to 200ppm)



MacDermid Enthone

M-Contact IN-2000

Acid Indium for Connector Plating

Excellent Plating Uniformity Across a Wide Range of Geometries

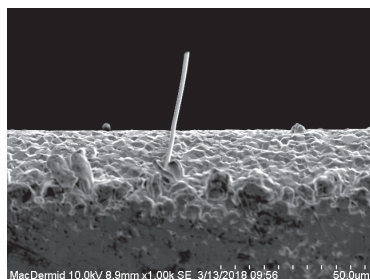
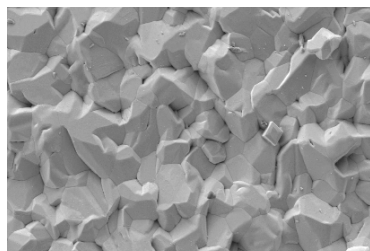
M-Contact IN-2000 provides a uniform thickness distribution across many kinds of geometries meaning that it is a versatile option for the complex shapes encountered in connector plating applications. Compared to other similar offerings, the IN-2000 bath will not produce burned tip defects in areas that have high current density.



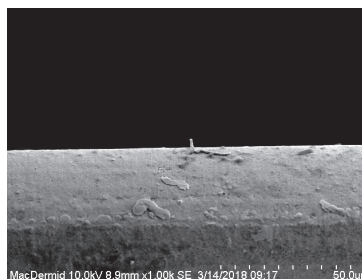
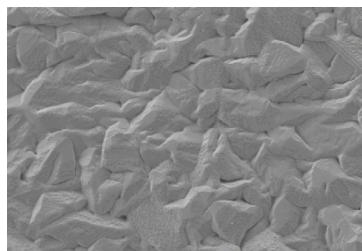
The M-Contact IN-2000 plates a uniform indium coating over complex shapes.

Similar Morphology to Tin; Virtual Elimination of Whiskers

Pure Tin Coating



M-Contact IN-2000 Indium Coating



With a microtopography similar to that of pure tin, but without the danger of failure due to whiskering, the M-Contact IN-2000 is an excellent choice for high reliability connector plating applications such as press-fit connectors.



macdermidalpha.com
March, 2019

MacDermid Enthone is a product brand of MacDermid Alpha Electronics Solutions.